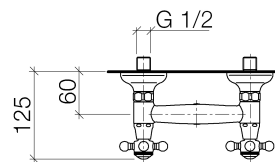
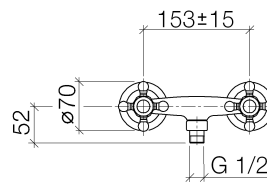




Product specifications

- 1/2" Shower outlet
- Flanges, diameter 2-3/4"
- 1/2" connection
- Center to center 6" ± 5/8"

NOTE: Local building codes may require the use of an anti-scald device. Please refer to remote pressure balance valve (35 910 970 90) Internal backflow preventer.



26 101 360-FF

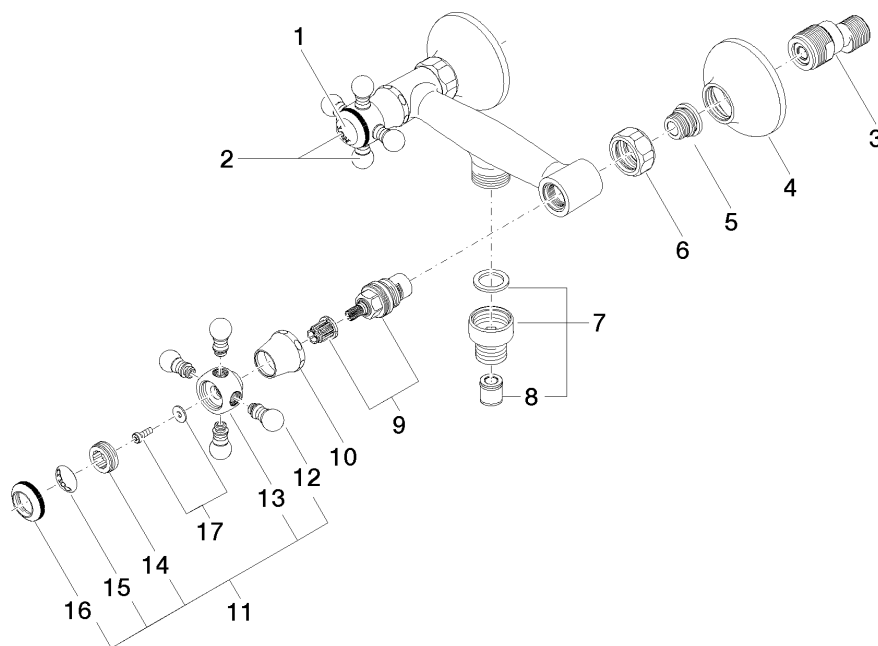
Surfaces

- | | |
|-----------------|-------------|
| • chrome | 26101360-00 |
| • matt platinum | 26101360-06 |
| • platinum | 26101360-08 |
| • brass | 26101360-09 |

Accessories required

- Rough-in adapter; 35 080 970

Exploded assembly drawing



Order quantity

No.	Article number	Name	Installation quantity
1	09260101190	accessories	1
2	04203600207ff	handle (hot)	1
3	0411040300090	connection	2
4	092739010ff	rosette	2
5	0429050140090	nipple	2
6	092330010ff	nut	2
7	04240300300ff	nipple	1
8	09230114190	back-flow preventer	1
9	9090031310090	top	2
10	092102055ff	cover	2
11	04203600206ff	handle (cold)	1
12	092036004ff	handle	8
13	092036002ff	handle	2
14	09208300690	handle	2
15	09260101090	accessories	1
16	092036005ff	handle	2
17	0430300290090	fixing set	2

Flow rate chart

