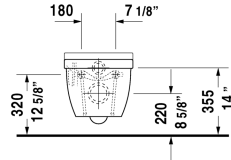
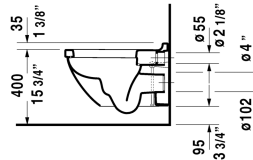
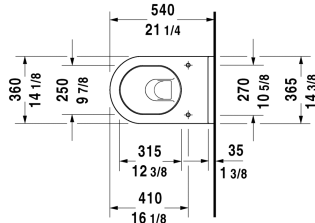


**Starck 3 Toilet wall-mounted # 222509..92**

| &lt; 14 1/8" Inch &gt; |



| Toilet wall-mounted  | Dimension              | Weight  | Order number |
|--|------------------------|---------|--------------|
| washdown model, Durafix included, cUPC® listed*  |                        |         |              |
| <b>Colors</b>  |                        |         |              |
| 00 White 20 HygieneGlaze (an antibacterial ceramic glaze that provides almost indefinite effectiveness)  |                        |         |              |
| <b>Variant</b>   |                        |         |              |
| ♣ 1.6/0.8 gpf  | 14 1/8" x 21 1/4" Inch | 59.6 lb | 222509..92   |
| <b>Infobox</b>   |                        |         |              |
| * Complies with following standards: ASME A112.19.2/CSA B45.1 and ASME A112.19.14, Durafix for concealed fixation is included, In-wall tank & carrier and actuator plate required for installation / Refer to page XXX, Wall-mounted toilet is ADA compliant, when installed with a seat height of 17" - 19" from the finished floor |                        |         |              |
| Sanitary ceramics with the special WonderGliss surface finish will remain clean and attractive-looking for a long time to come.<br>When ordering WonderGliss please add a "1" as eleventh digit to the model number.   |                        |         |              |
| Sigma 01 flush plate, dual flush for toilets, White  | 9 5/8" x 6 1/2" Inch   |         | 115770       |
| Geberit carrier for toilets  | 19 3/4" x 3 1/8" Inch  | 37.5 lb | 111798       |
| Geberit in-wall tank and carrier for toilets, width 19 3/4", depth 5 1/2", height (adjustable) 43" - 47"   | 19 3/4" x 5 1/2" Inch  | 40.8 lb | 111335       |
| Noise reduction gasket for wall-mounted toilet   |                        | 0.7 lb  | 005020       |
| <b>Suitable products</b>   |                        |         |              |
| Toilet seat and cover hinges stainless steel, without slow close,  |                        |         | 006381       |
| Toilet seat and cover hinges stainless steel, removable, with slow close,  |                        |         | 006389       |

All drawings contain the necessary measurements which are subject to standard tolerances. They are stated in inch & mm and are non-binding. Exact measurements, in particular for customized installation scenarios, can only be taken from the finished ceramic piece.