


**SPECIFICATIONS**

**Features/Benefits**

- 1.2 gpm (4.5 L/min) Max Flow @ 60 psi with Laminar Water Stream
- Alternative Flow Rates Available with Spray Water Stream
  - 1.0 gpm (3.8 L/min) When Used with DA613082N Aerator
  - 0.5 gpm (1.9 L/min) When Used with DA613081N Aerator
- 5 5/16" Spout Height, 4 7/8" Spout Reach
- Ceramic Disc Cartridge
- Includes Metal Touch-Down Drain Assembly
- Single Hole Mount
- Optional Deck Plate, DA607568, Sold Separately
- Temperature Indicators Included on Faucet Body

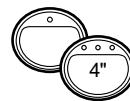


**Available Color/Finishes**

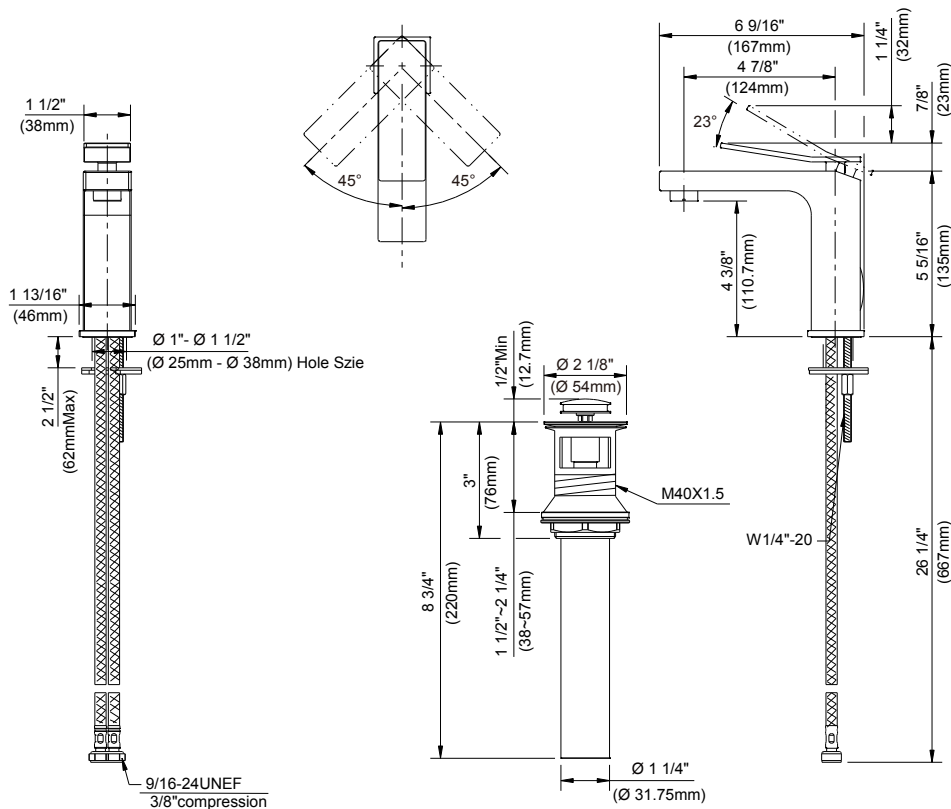
Color	Description
	Chrome

Please see danze.com or current price list for available finishes.  
Finish is defined by additional suffix.

**Mount Type**



**Standards & Certifications**



**Submittal Information:**

Name: \_\_\_\_\_  
Location: \_\_\_\_\_

Contractor: \_\_\_\_\_  
Contact #: \_\_\_\_\_

**WARRANTY:** Danze products are covered by a manufacturer's lifetime limited warranty for manufacturing defects.