


### SPECIFICATIONS

#### Features/Benefits



- Diverter on Valve
- Requires Gerber Treysta® Rough-In, G00GS555S (Horizontal Inputs) or G00GS557S (Vertical Inputs), Sold Separately
- Includes Treysta® Ceramic Disc Pressure Balance Cartridge
- Includes Surge® 4 1/2" 5 Function Showerhead, D462027 (1.75 gpm) or D460029 (2.0 gpm)
- 1.75 gpm (6.6 L/min) Max Flow @ 80 psi (D500057TC)
- 2.0 gpm (7.6 L/min) Max Flow @ 80 psi (D512157TC)
- 12" Metal Shower Arm, D481376
- 6" Tub Spout DA666573
- Finish-Matched Deep Wall Kit, D113001, Sold Separately
- Finish-Matched Shallow Wall Kit, GA663B11, Sold Separately

#### Available Color/Finishes

Color	Description
	Chrome

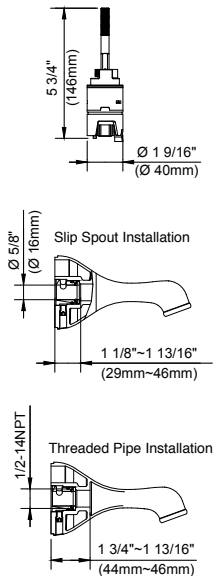
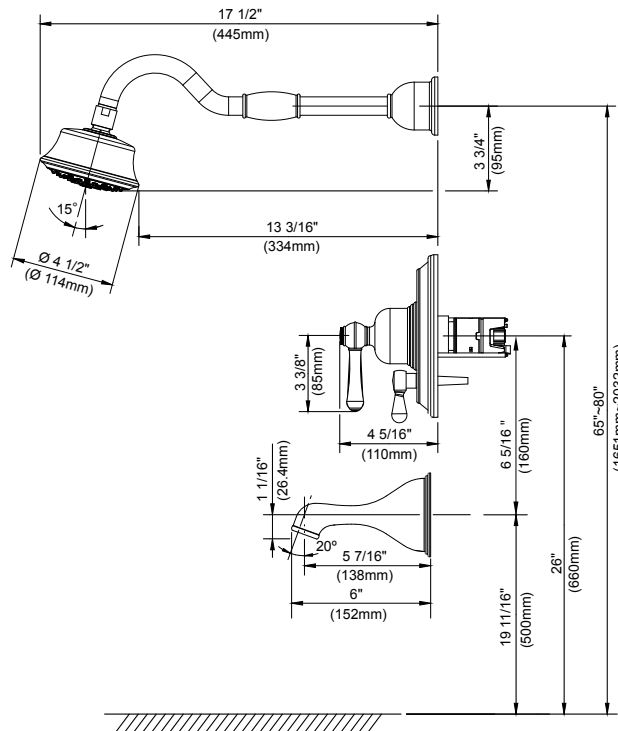
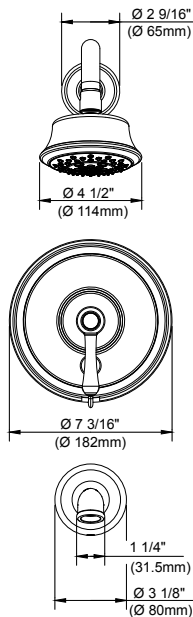
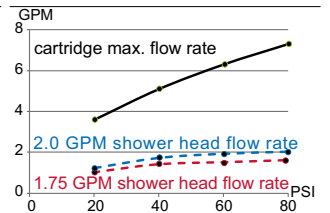
Please see [gerberonline.com](http://gerberonline.com) or current price list for available finishes. Finish is defined by additional suffix.

#### Standards & Certifications



(Lever Handle)

#### Flow Rate



#### Submittal Information:

Name: \_\_\_\_\_ Contractor: \_\_\_\_\_  
 Location: \_\_\_\_\_ Contact #: \_\_\_\_\_