

## REMOTE CONTROL INSTALLATION

**NOTE:**

When installing the remote control, be sure your fan is operated in "HIGH SPEED" and light is in "ON" condition at the switch knob.

### GENERAL INFORMATION

This remote control is designed to separately control your ceiling fan speed and light brightness.

- The fan button will control the fan speed. (Hi, Med., Low, Off)
- The light buttons will control the lights, brightness dimmer and off.
- The red indicator on the transmitter will light when the button is pressed.

### INSTALLATION AND OPERATING INSTRUCTIONS

**NOTE:** This remote control unit is equipped with 16 frequency code combinations to prevent possible interference from or to other remote units. The frequency switches on your receiver and transmitter have been preset at the factory. Please recheck to make sure the switches on transmitter and receiver are set to the same position, any combination of settings will operate the fan as long as the transmitter and receiver are set to the same position.

#### 1. SETTING THE FREQUENCY CODE

To set the frequency (code), follow these steps

**Caution!** The dip switches on the receiving unit are covered with a rubber cover, remove the rubber cover and then have it replaced after making any changes to the dip switches.

- Setting the code on the transmitter:
  - Remove the battery cover. Press firmly below the arrow and slide battery cover off.
  - Slide the code switches to your choice of up or down position. (Factory setting is all up). Use a small screwdriver or a ballpoint pen to slide each small switch UP or DOWN. (Fig. A)
  - Replace the battery cover on the transmitter.
- To set the code on the receiver, slide each code switch to the same position as set on your transmitter. (Fig. B)

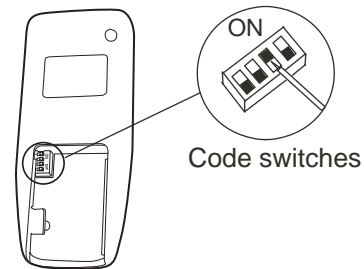
#### 2. INSTALLING THE RECEIVER UNIT

- Safety precautions:
 

**WARNING: HIGH VOLTAGE!** Household electrical power can cause serious injury or death. Disconnect the source of electrical power to the ceiling fan by removing the fuse or switching off the circuit breaker.
- Installing the receiver unit.
  - Remove the ceiling fan canopy from the mounting bracket.
  - Disconnect the existing wiring between the ceiling fan and supply at the electrical junction box.
  - Lay the black antenna wire on top of the receiver and slide the receiver into the mounting bracket as shown in Figure C. Do NOT let the antenna wire get tangled up in the other electrical wires.
  - Make the connections as follows, using the wire nuts supplied: (Fig. D)

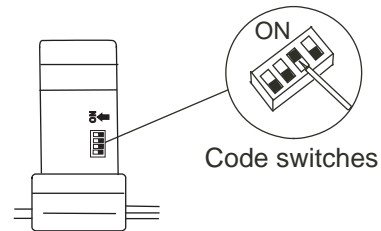
**CONNECT TO**

Green fan wire.....Bare supply wire  
 Black receiver wire (AC IN L).....Black supply wire  
 White receiver wire(AC IN N).....White supply wire  
 White receiver wire (TO MOTOR N).....White fan wire  
 Black receiver wire (TO MOTOR L).....Black fan wire  
 Blue receiver wire(FOR LIGHT).....Blue light wire



Transmitter

Fig. A



Receiver

Fig. B

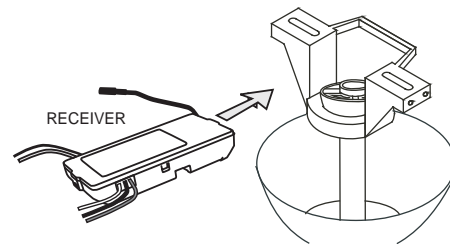


Fig. C

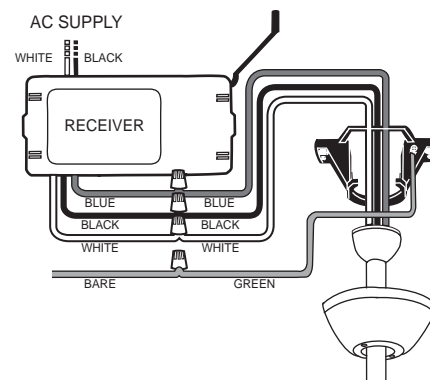


Fig. D

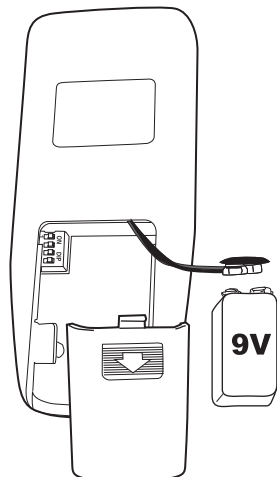


Fig. E

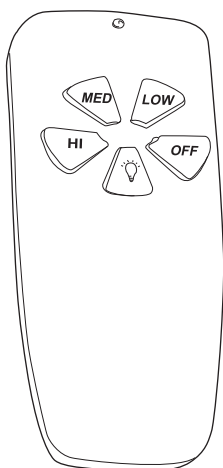


Fig. F

**If any of the fan or supply wires are a different color, have this unit installed by a qualified electrician.**

- e. Push all connected wires up into junction box.
- f. Reinstall the canopy on the mounting bracket.
- g. Restore the electrical power.


### 3. OPERATING TRANSMITTER:

- A. Install 1 x **9V** battery (included). To prevent damage to transmitter, remove the battery if not used for long periods. (Figure E)
- B. Store the transmitter away from excess heat or humidity.
- C. This remote control unit is equipped with 16 frequency code combinations to prevent possible interference from or to other remote units such as garage door openers, car alarm or security system. If you find that your fan and light kit go on and off without using your remote control, simply change the combination code in your transmitter and receiver.
- D. Operation buttons on the panel of the transmitter: (Figure F)  
The "**HI, MED, LOW**" buttons:  
These three buttons are used to set the fan speed as follows:  
**LOW**= Low speed **MED**= Medium speed **HI**= High speed

The "**OFF**" button:

This button turns the fan MOTOR off.

The "" button:

This button controls the light brightness and will turn the light on or off. The light function is controlled by pressing the "" key. Hold the key down to increase or decrease the light. Tap the key quickly to turn the light off or on. If you press the button in excess of 0.7 seconds it becomes a dimmer. The light varies cyclically in 0.8 seconds. The light key has auto resume, so it will stay at the same brightness as the last time it was turned off.

**YOUR REMOTE NOW HAS FULL CONTROL OF THE FAN AND LIGHT.**

### 4. TROUBLESHOOTING GUIDE

If the Ceiling Fan and or light fixture(s) fail to respond to commands from the transmitter, check the following.

- Check the main power supply and reset or turn on the breaker.
- Make sure the "Receiver Unit" is wired properly.
- Light Fixture pull chain switch turned to ON ?
- Make sure the speed pull chain is set to the HIGHEST speed.
- Good batteries in transmitter ? Replace if needed.
- Transmitter and Receiver "frequency" switches set to match each other ?

**NOTE:** The distance between the transmitter and receiver should not be greater than 30 feet. For best performance, make sure the Black Antenna on the end of the receiver unit remains extended and not tangled with any of the electrical wires.

**WARNING:** This control system is intended for use on 120 volt / 60Hz power systems ONLY.

**WARNING:** The dimming function on this control system is NOT intended for use with NON-Dimmable Fluorescent lamps.