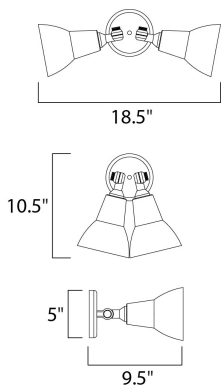




#### PRODUCT DESCRIPTION

Maxim Lighting's commitment to both the residential lighting and the home building industries will assure you a product line focused on your lighting needs. With Maxim Lighting you will find quality product that is well designed, well priced and readily available.



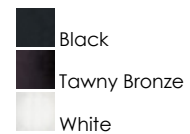
#### MEASUREMENTS

DIMENSION : 18.5" W x 10.5" H x 9.5" Ext  
 BACK PLATE : 5" W x 5" H x 3" HCO  
 HANGING WEIGHT : 1.9 lb

#### LAMPING

INPUT VOLTAGE : 120V  
 LUMENS : 4,350 Rated  
 BULB : 2 x 75W Incandescent E26 Medium PAR38 , 150W Total  
 BULB INCLUDED : (Not Included)  
 DIMMABLE : Yes

#### FINISHES OPTION



#### MATERIAL

Die Cast Aluminum

#### RATINGS

cETLus  
 Wet Location



#### ADDITIONAL

RATED LIFE 750 Hours  
 OPERATING TEMPERATURE:  
 -20°C (-4°F), 40°C (104°F)

Always consult a qualified electrician before installing any lighting product.



#### WESTERN DISTRIBUTION CENTER (HEADQUARTER)

253 NORTH VINELAND AVE | CITY OF INDUSTRY, CA 91746

#### EASTERN DISTRIBUTION CENTER

4200 SHIRLEY DR. | ATLANTA, GA 30336

P. 626.956.4200 | F. 626.956.4225 | maximlighting.com