

# NEWPORT BATH

## Features

- Solid brass construction
- 1/2" NPT Inlet
- 1.75" x 2.20" integral flange
- Complements Metro product series

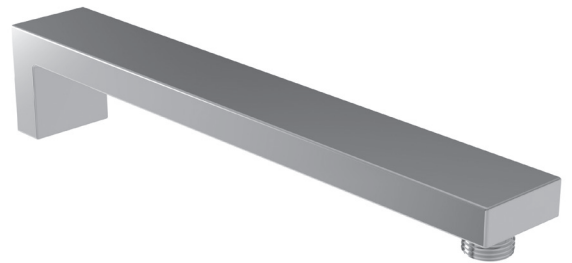
## Shower Arm with Flange

# 201-1001

## Codes / Standards Compliance

Meets or exceeds the following at date of manufacture:

- All applicable US Federal and State material regulations



## Colors / Finishes

- 10B: Oil Rubbed Bronze
  - 15: Polished Nickel
  - 15S: Satin Nickel - PVD
  - 26: Polished Chrome
- Other: Refer to the Newport Brass catalog for additional color/finish options.

## Specified Model

Model	Description	Colors   Finishes
201-1001	12" Shower Arm with Integral Flange	<input type="checkbox"/> 10B <input type="checkbox"/> 15 <input type="checkbox"/> 15S <input type="checkbox"/> 26 <input type="checkbox"/> Other

## Product Specification:

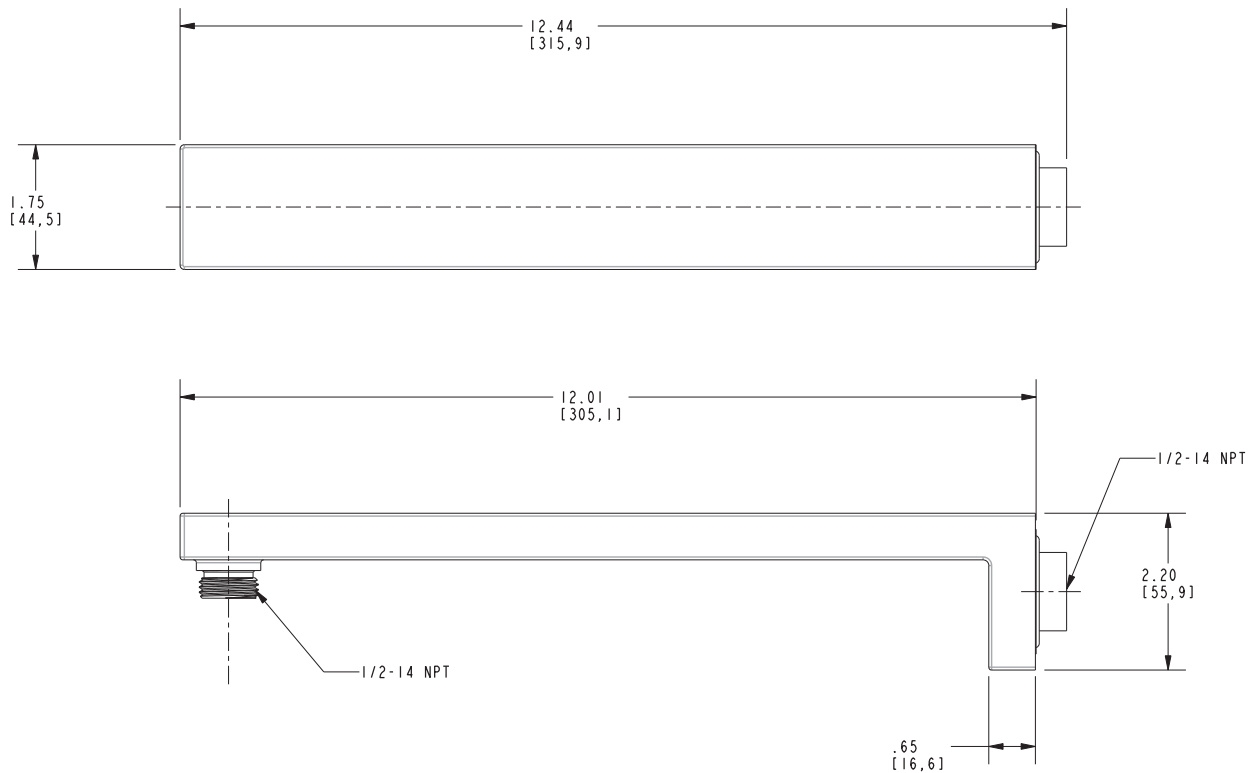
Add "Color / Finish" suffix to Model number, below.

The Shower Arm with Flange shall be made of solid brass construction. Product shall incorporate 1/2" NPT inlet and have an approximate length of 12". Product shall have an integral flange covering a 1.75" x 2.20" area of the wall. Product shall complement Metro product series. Shower Arm with Flange shall be Newport Brass Model 201-1001/\_\_\_\_\_.

# 201-1001

## PRODUCT DIMENSIONS *(Units are in inches)*

Product Dimensions are provided for reference only. For specific product installation guidelines, please reference the Installation Instructions of the product being installed.



### Newport Bath Shower Arm with Flange 201-1001