

NHIC-5LMRAT

5" Recessed LED Dedicated IC Air-Tight New Construction Housing

Source: 17.5W max.

(Compatible with PRISM, Cobalt, Marquise, Onyx, CAMO, Opal)

Type

Project

Catalog No.

Notes

PRODUCT DESCRIPTION

Dedicated new construction housing for use in insulated ceilings can be in direct contact with insulation.* Air-tight construction provides energy savings by reducing the flow of air through the ceiling. The housing is dedicated and labeled for use with PRISM, Cobalt, Marquise, Onyx, CAMO and Opal series LED fixtures.

FEATURES

- IC rated for direct contact with insulation
- Quick connect provided for electrical connection to the LED reflectors
- ASTM E283 for Air-Tight
- 24-1/2" bar hangers with captive nails and alignment foot

CONSTRUCTION

Plaster Frame: High quality 0.04" steel die cut one piece frame.

Housing: 0.040 aluminum housing with riveted cap adjusts to a maximum ceiling thickness of 1-3/4". Spring brackets accept torsion wing trim springs; slots on socket plate surface accept standard coil springs.

Air Flow Restriction: Housing has factory installed gaskets to restrict airflow from room into ceiling plenum to <2CFM (cubic feet per minute) in accordance with ASTM-283 Air-Tight requirements.

Clearance: "IC" Insulated ceiling housings are direct contact rated. **Not to be used in direct contact with spray foam insulation.**

Bar Hangers: Two 13-3/4" to 24-1/2" adjustable bar hangers with captive nails are included on frame. Bar hangers are parallel to junction box, but can be repositioned 90° perpendicular to junction box if desired. "L" Shaped bar hanger foot to align to bottom of construction joist. A T-Bar notch allow for easy installation in a suspended ceiling.

Junction Box: Prewired 25 cubic inch 0.064" thick galvanized steel, with five 1/2", two 3/4" knockouts and four Romex pryouts and snap on covers. All leads are #18AWG wire, the ground wire is connected to the bottom, and quick connectors are supplied on all leads. Through branch circuit wiring, (4-in, 4-out).

ELECTRICAL

Input Voltage: 120V or 120/277V (must specify)

Socket: Quick connect for LED reflectors

Wattage: 16W max.

Dimming: Triac, ELV or 0-10V (must specify)

COMPATIBILITY

NLPR-56 - PRISM Series

NLCBC-5 / NLCBC2-5 - Cobalt Series

NRMC-5 - Marquise I Series

NRMC2-5 - Marquise II Series

NOX-56 - Onyx Series

NLOPAC-R6 - Opal Series

NLOCAC-6R - CAMO Series

Step Down Transformer (converts 277V input to 120V):

Optional 50W step down transformer installed (NHIC-5LMRAT/277). Through branch wiring is limited to 3-in and 3-out.

Emergency: Housing can be specified with an emergency battery installed on frame (Cobalt only). Requires top access.

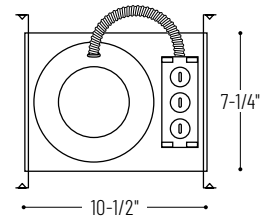
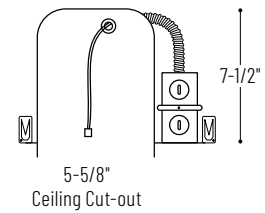
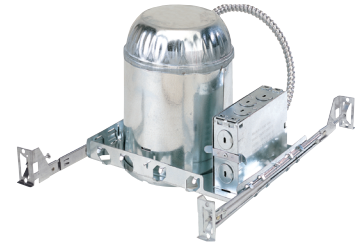
- Up to 7.5W emergency illumination with LEDs
- Illumination Time: 90min
- Voltage: 120/277 VAC, 60Hz
- Output Voltage: 15.0-50.0 VDC
- Remote test switch included

LABELS AND LISTINGS

- cULus Listed for Damp Location (wet location when used with compatible reflectors)
- Meets or exceeds ASTM-283 Air-Tight requirements
- Can be used to comply with 2016 Title 24 - part 6 High Efficacy LED light source requirements when used with compatible reflector
- RoHS compliant



PRODUCT IMAGES & DIMENSIONS



5" Recessed LED Dedicated IC Air-Tight New Construction Housing

Catalog No.

NHIC-5LMRAT = 5" LED Dedicated IC Air-Tight Housing, 120V input; Triac/ELV dimming

NHIC-5LMRAT/EM = 5" LED Dedicated IC Air-Tight Housing, 120V input; Triac/ELV dimming with Emergency Battery and Remote Test Switch (Cobalt only - EM required)

NHIC-5LMRAT/277 = 5" LED Dedicated IC Air-Tight Housing, 277V input with 50W Step Down Transformer

NHIC-5LMRAT/277EM = 5" LED Dedicated IC Air-Tight Housing, 277V input with 50W Step Down Transformer and Emergency Battery with Remote Test Switch (Cobalt only - EM required)

NHIC-5LMRAT/4W = 5" LED Dedicated IC Air-Tight Housing, 120/277V input; Triac/ELV/0-10V dimming (Cobalt only - LE4 required)

NHIC-5LMRAT/6WEM = 5" LED Dedicated IC Air-Tight Housing, 120/277V input; Triac/ELV/0-10V dimming with Emergency Battery and Remote Test Switch (Cobalt only - LE4EM required)

Example: **NHIC-5LMRAT** = 5" LED Dedicated IC Air-Tight New Construction Housing, 120V input; Triac/ELV dimming