

# NM2-2RDC

## 2" M2 Round LED Recessed Downlight

Source: 6W, 8W or 10W LED  
400lm, 600lm or 850lm

### PRODUCT DESCRIPTION

M2 downlight series features quality and convenience with easy installation for insulated or non-insulated applications. Luminaires can be configured into multiple options with trim accessories and produces over 850 lumens.

### FEATURES

- No housing required - IC Air-Tight rated
- Easy installation for remodel or new construction applications
- Variety of trim accessories to configure desired appearance
- Quick disconnect allows for extended lengths
- 400lm, 600lm or 850lm LED packages
- 2700K or 3000K @ 90+ CRI
- Triac or ELV dimming
- 5-year limited warranty
- ENERGY STAR certified
- cETLus Listed for Damp Locations

### SPECIFICATION

**Construction:** Die-cast aluminum trims available in matte black or matte powder white finish. Open downlight includes a reflector with the same finish as trim; optional field changeable accessories are available; square trim, pinhole trim, wall wash trim, reflector inserts or baffle inserts.

**Air Flow Restriction:** Luminaire has factory installed gasket to restrict airflow from room into ceiling plenum to <2CFM (cubic feet per minute) in accordance with ASTM-283 Air-Tight requirements.

**Clearance:** IC rated luminaires are rated for direct contact with insulation (not spray foam insulation), no minimum clearance is required.

**Junction Box:** Prewired junction box includes quick connect to LED fixtures for ease of installation. Junction box includes two (400lm/600lm) or four (850lm) 1/2" trade size knockouts and snap on cover with 7" quick connect wire. Luminaire includes 5" (400lm/600lm) or 4" (850lm) quick connect wire.

**Mounting:** No housing is required, two tensions steel spring clips secure luminaire to ceiling. Accommodates ceiling thickness up to 3/4". New construction frame-in kit is available, see accessories.

### ELECTRICAL

**Input Voltage:** 120V  
**Lumens / Wattage:**  
**40** = 400lm / 6W; **60** = 600lm / 8W; **85** = 850lm / 10W  
**Color Temperature:** 2700K or 3000K  
**CRI:** 90+CRI  
**Beam Spread:** 36° Flood  
**Operating Temp.:**  
**40 & 60** = 0°C to 40°C ambient temperature  
**85** = 0°C to 25°C ambient temperature  
**Lifetime:** 60,000 hours @ L70  
**Dimming:** Dimmable down to 10% with Triac or ELV  
[Click Here](#) or check complete dimmer list at [www.NoraLighting.com](http://www.NoraLighting.com) in the "Compatibility" page under "Resources" tab

**Trims:** M2 series is available in three lumen outputs with LED driver. Round trims can be converted to baffles, pinholes or wall wash in the field with optional trims and inserts.

### OPTIONAL TRIM ACCESSORIES

**NM2-2REFL:** Reflector Insert for NM2-2RDC, Black or Haze  
**NM2-2BAF:** Baffle Insert for NM2-2RDC, Black or White  
**NM2-2RPH:** Round Pinhole Trim for NM2-2RDC, Black or White  
**NM2-2RW:** Round Wall Wash Trim for NM2-2RDC, Black or White  
**NM2-2SDT:** Square Trim for NM2-2RDC, Black or White

### OPTIONAL MOUNTING ACCESSORIES

**NM2-2R-F:** New Construction Frame-In Plate  
**NM2-EW-4:** 4' Quick Connect Linkable Extension Cable  
**NM2-EW-10:** 10' Quick Connect Linkable Extension Cable

### LABELS AND LISTINGS

- cETLus Listed for Damp Locations
- ENERGY STAR certified
- [5-Year Limited Warranty](#)
- FCC compliant
- Certified to the high efficacy requirements of California Title 24 JA8-2019



Type

Project

Catalog No.

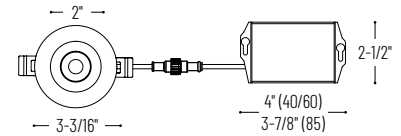
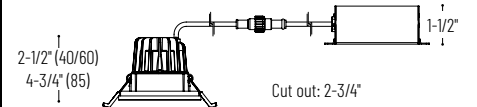
Notes

### PRODUCT IMAGES AND DIMENSIONS

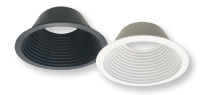


**NM2-2RDCXXXBB**  
400lm or 600lm  
Matte Black

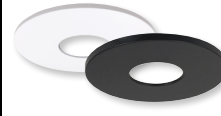
**NM2-2RDC85XXMPW**  
850lm  
Matte Powder White



**NM2-2REFL**  
Reflector Insert



**NM2-2BAF**  
Baffle Insert



**NM2-2RPH**  
Round Pinhole Trim



**NM2-2RW**  
Round Wall Wash Trim



**NM2-2SDT**  
Square Trim

## 2" M2 Round LED Recessed Downlight

Trim Type	Lumens / Wattage	Color Temperature / CRI	Finish
<b>NM2-2RDC</b> = 2" Round Downlight	<b>40</b> = 400lm / 6W	<b>27</b> = 2700K / 90 CRI	<b>BB</b> = Matte Black
	<b>60</b> = 600lm / 8W	<b>30</b> = 3000K / 90 CRI	<b>MPW</b> = Matte Powder White
	<b>85</b> = 850lm / 10W		

## M2 Trim Accessories

Accessory Type	Finish
<b>NM2-2REFL</b> = Reflector for NM2-2RDC	<b>B</b> = Matte Black
<b>NM2-2BAF</b> = Baffle for NM2-2RDC	<b>HZ</b> = Haze (NM2-2REFL only)
<b>NM2-2RPH</b> = Round Pinhole Trim for NM2-2RDC	<b>MPW</b> = Matte Powder White
<b>NM2-2RW</b> = Round Wall Wash Trim for NM2-2RDC	
<b>NM2-2SDT</b> = Square Trim for NM2-2RDC	

## Optional Mounting Accessories

Description
<b>NM2-2R-F</b> = New Construction Frame-In Plate
<b>NM2-EW-4</b> = 4' Quick Connect Extension Cable
<b>NM2-EW-10</b> = 10' Quick Connect Extension Cable

Example: **NM2-2RDC6030MPW** = 2" M2 Round LED Recessed Downlight, 600lm / 8W, 3000K / 90 CRI, Matte Powder White

# NM2-2RDC

2" M2 Round LED Recessed Downlight Accessories

Type
Project
Catalog No.
Notes



Reflector Insert for NM2-2RDC

**NM2-2REFLB** Matte Black  
**NM2-2REFLHZ** Haze  
 Replaces the reflector included with NM2-2RDC downlight



Baffle Insert for NM2-2RDC

**NM2-2BAFB** Matte Black  
**NM2-2BAFMPW** Matte Powder White  
 Replaces the reflector included with NM2-2RDC downlight



Square Trim for NM2-2RDC

**NM2-2SDTB** Matte Black  
**NM2-2SDTMPW** Matte Powder White  
 Converts the round trim included with NM2-2RDC downlight into a square trim



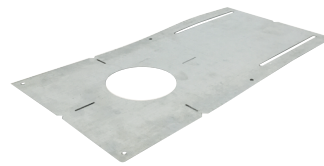
Round Pinhole Trim for NM2-2RDC

**NM2-2RPHB** Matte Black  
**NM2-2RPHMPW** Matte Powder White  
 Converts the round trim included with NM2-2RDC downlight into a round pinhole



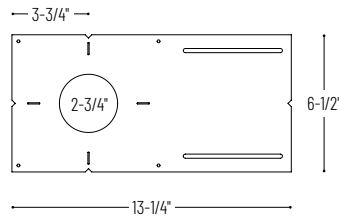
Round Wall Wash Trim for NM2-2RDC

**NM2-2RWB** Matte Black  
**NM2-2RWMPW** Matte Powder White  
 Converts the round trim included with NM2-2RDC downlight into a round wall wash



New Construction Frame-In Plate

**NM2-2R-F**  
 For new construction pre-wiring and easier layout planning.



Quick Connect Extension Linkable Cables

**NM2-EW-4** 4' Cable  
**NM2-EW-10** 10' Cable  
 Use to extend the length between luminaire and driver enclosure. Can be connected together to create custom lengths. Maximum length between luminaire and driver is 40'.

## Luminaire Examples



# PHOTOMETRICS

## 2" M2 Round LED Recessed Downlight

Type

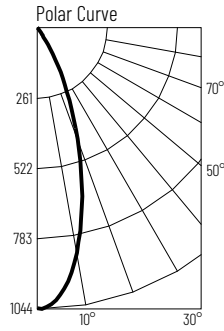
Project

Catalog No.

Notes

### Test Information

Test Number: NTR11363  
 Part Number: NM2-2RDC4027MPW  
 Beam Spread: 36° Flood  
 Lumens: 445lm  
 Wattage: 6.2W  
 Efficacy: 72lpw  
 CCT / CRI: 2700K / 90 CRI  
 Spacing Criteria (0°-180): 0.6  
 Spacing Criteria (90°-270): 0.6



### Illuminance at a Distance

Distance from Luminaire	FC at Nadir	Beam Diameter
2'	261fc	1'-4"
4'	65.3fc	2'-7"
6'	29fc	3'-11"
8'	16.3fc	5'-2"
10'	10.4fc	6'-6"

### Zonal Lumen Summary

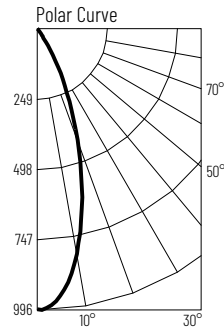
Zone	Lumens	% Luminaire
0-30	387	86.8
0-40	418	93.7
0-60	436	97.9
0-90	443	99.6
90-180	2	0.4
0-180	445	100

### Candela Table

Vertical Angles	Candela
0	1044
5	993
15	645
25	264
35	42
45	14

### Test Information

Test Number: NTR11350  
 Part Number: NM2-2RDC4030MPW  
 Beam Spread: 37° Flood  
 Lumens: 464lm  
 Wattage: 6.23W  
 Efficacy: 75lpw  
 CCT / CRI: 3000K / 90 CRI  
 Spacing Criteria (0°-180): 0.62  
 Spacing Criteria (90°-270): 0.62



### Illuminance at a Distance

Distance from Luminaire	FC at Nadir	Beam Diameter
2'	248fc	1'-4"
4'	61.9fc	2'-8"
6'	27.5fc	4'
8'	15.5fc	5'-5"
10'	9.9fc	6'-8"

### Zonal Lumen Summary

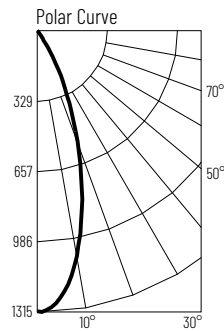
Zone	Lumens	% Luminaire
0-30	393	84.7
0-40	434	93.5
0-60	455	98
0-90	464	99.9
90-180	1	0.1
0-180	464	100

### Candela Table

Vertical Angles	Candela
0	990
5	950
15	639
25	272
35	51
45	15

### Test Information

Test Number: NTR11351  
 Part Number: NM2-2RDC6027MPW  
 Beam Spread: 37° Flood  
 Lumens: 594lm  
 Wattage: 7.8W  
 Efficacy: 76lpw  
 CCT / CRI: 2700K / 90 CRI  
 Spacing Criteria (0°-180): 0.62  
 Spacing Criteria (90°-270): 0.6



### Illuminance at a Distance

Distance from Luminaire	FC at Nadir	Beam Diameter
2'	327fc	1'-4"
4'	81.9fc	2'-8"
6'	36.4fc	4'
8'	20.5fc	5'-5"
10'	13.1fc	6'-8"

### Zonal Lumen Summary

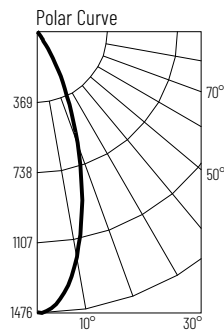
Zone	Lumens	% Luminaire
0-30	505	85
0-40	557	93.7
0-60	582	97.9
0-90	593	99.8
90-180	1	0.2
0-180	594	100

### Candela Table

Vertical Angles	Candela
0	1310
5	1251
15	847
25	359
35	85
45	19

### Test Information

Test Number: NTR11351  
 Part Number: NM2-2RDC6030MPW  
 Beam Spread: 36° Flood  
 Lumens: 641lm  
 Wattage: 8.1W  
 Efficacy: 79lpw  
 CCT / CRI: 3000K / 90 CRI  
 Spacing Criteria (0°-180): 0.6  
 Spacing Criteria (90°-270): 0.6



### Illuminance at a Distance

Distance from Luminaire	FC at Nadir	Beam Diameter
2'	368fc	1'-4"
4'	92.1fc	2'-7"
6'	40.9fc	3'-11"
8'	23fc	5'-2"
10'	14.7fc	6'-6"

### Zonal Lumen Summary

Zone	Lumens	% Luminaire
0-30	547	85.4
0-40	597	93.2
0-60	626	97.8
0-90	639	99.8
90-180	1	0.2
0-180	641	100

### Candela Table

Vertical Angles	Candela
0	1473
5	1403
15	909
25	372
35	67
45	21

# PHOTOMETRICS

## 2" M2 Round LED Recessed Downlight

Type \_\_\_\_\_

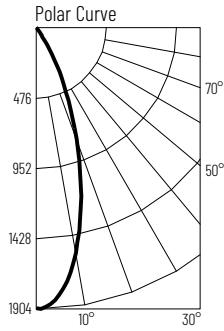
Project \_\_\_\_\_

Catalog No. \_\_\_\_\_

Notes \_\_\_\_\_

### Test Information

Test Number: NTR1431  
 Part Number: NM2-2RDC8530MPW  
 Beam Spread: 38° Flood  
 Lumens: 882lm  
 Wattage: 10.18W  
 Efficacy: 87lpw  
 CCT / CRI: 3000K / 90 CRI  
 Spacing Criteria (0°-180): 0.62  
 Spacing Criteria (90°-270): 0.62



### Illuminance at a Distance

Distance from Luminaire	FC at Nadir	Beam Diameter
2'	476fc	1'-5"
4'	119fc	2'-8"
6'	52.9fc	4'-1"
8'	29.7fc	5'-6"
10'	19fc	6'-11"

### Zonal Lumen Summary

Zone	Lumens	% Luminaire
0-30	757	85.9
0-40	824	93.4
0-60	864	98
0-90	880	99.8
90-180	2	0.2
0-180	882	100

### Candela Table

Vertical Angles	Candela
0	1904
5	1824
15	1246
25	540
35	88
45	27

PRELIMINARY SPEC SHEET