

A935 U1 XX

Venticello - Vanity Unit

Features

- Vanity Unit
- 37 1/2" x 16 1/2" x 19 3/4" (953 x 420 x 502 mm)
- Wall-mounted
- Incl. fixation set
- 1 pull-out compartment with non-slip mat
- 1 accessory box large
- 1 large glass drawer divider
- 2 small glass drawer dividers
- Soft closing
- Fully assembled



Codes / Standard applicable

Specified model meets or exceeds the following

- CARB Compliant materials
(ATCM 93120_93120.12 Title 17)
CARB P2

Colors - XX

- FQ = Oak Graphite
- E9 = Light wood
- E8 = White Wood

Product Description

Front: White Wood, Elm Impreso, Oak Graphite (MDF, vinyled)

Corpus: White Wood, Elm Impreso, Oak Graphite (particle board, melaminated)

Handle (attached metal strip): Chrome Finish

Pull-out element: fitted with Soft Closing feature

Interior compartments: adjustable low and high glass divisions, plastic accessory box

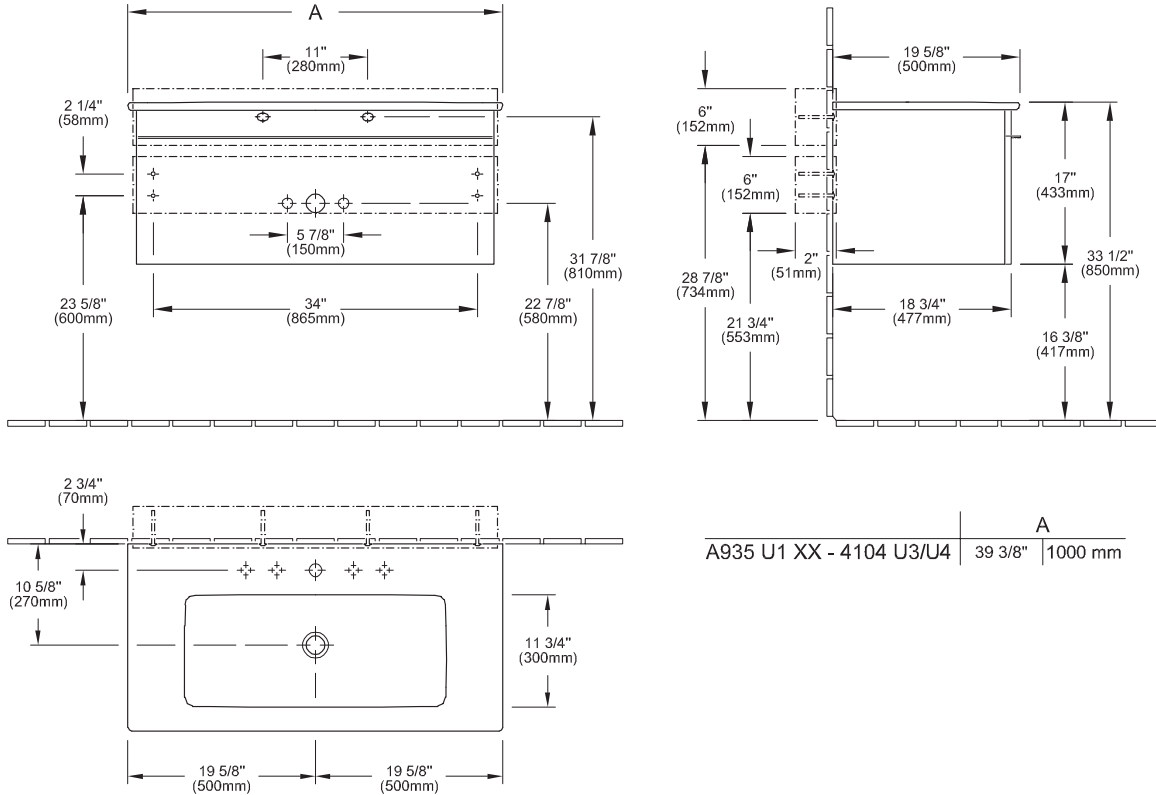
Included Components

- 2 x wood screw-RUKO-KS 1/4" / 2" (5,5/50 mm)
- 4 x UNI-dowel Nylon 3/8" x 1 5/8" (8x40 mm)
- 1 x pouch 3 15/16" x 7 7/8" (100x200 mm)

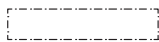
Installation Notes

Install this product according to the installation manual.

Technical Drawing



A935 U1 XX - 4104 U3/U4	A
	39 3/8" 1000 mm



+ Indicate location for inwall support bracket

+ Dimensions taken from finished floor level

+ Slnk not Included

--- Wall mounting